



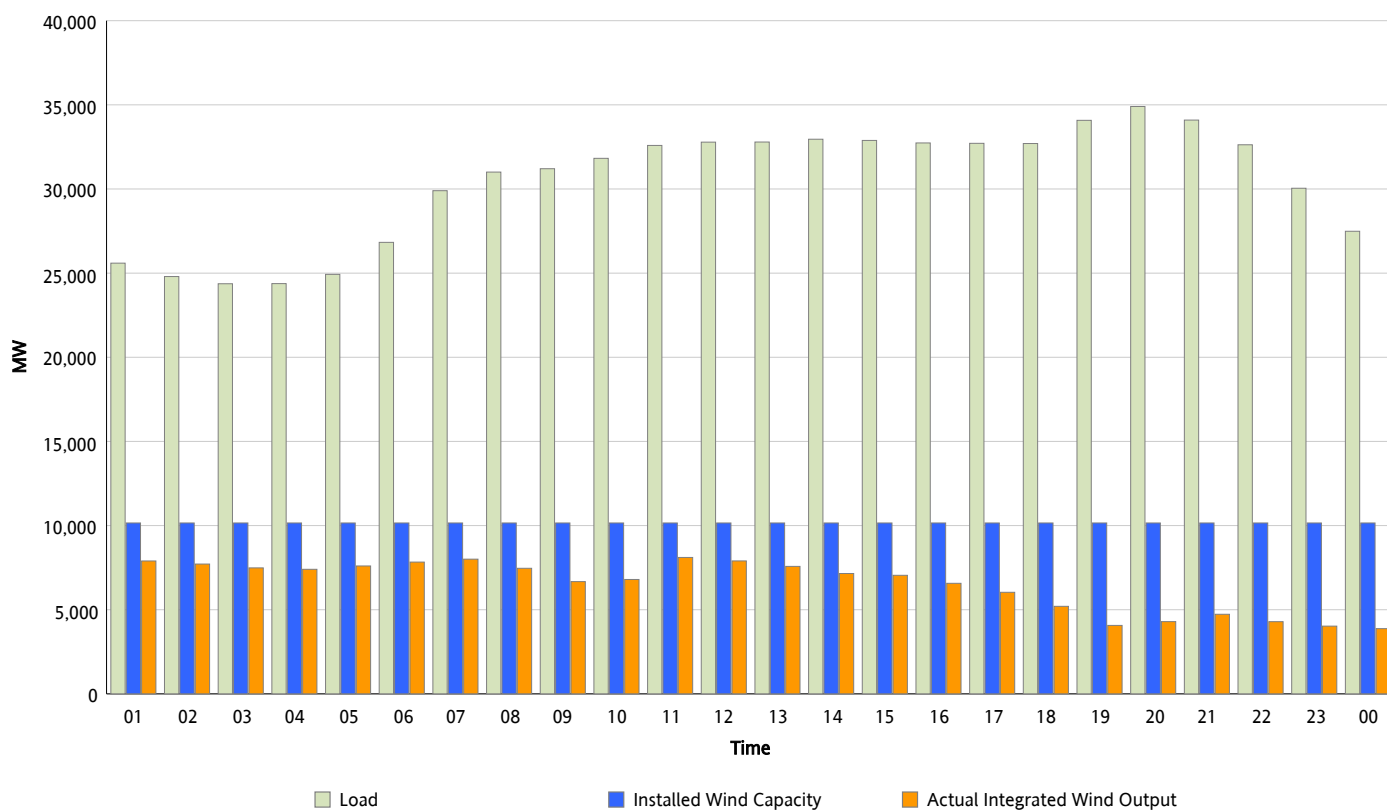
ERCOT Grid Operations

Wind Integration Report : 02/18/2013

Peak Load	34,902 MW
Load Peak Hour (HE)	20
Wind Over Peak	4,293 MW
Wind Record 02/09/13	9,481 MW
Max Wind Value*	8,328 MW
Wind Peak Time	10:22
Wind Integration %	25.57 %

Hourly Average Actual Load vs. Actual Wind Output

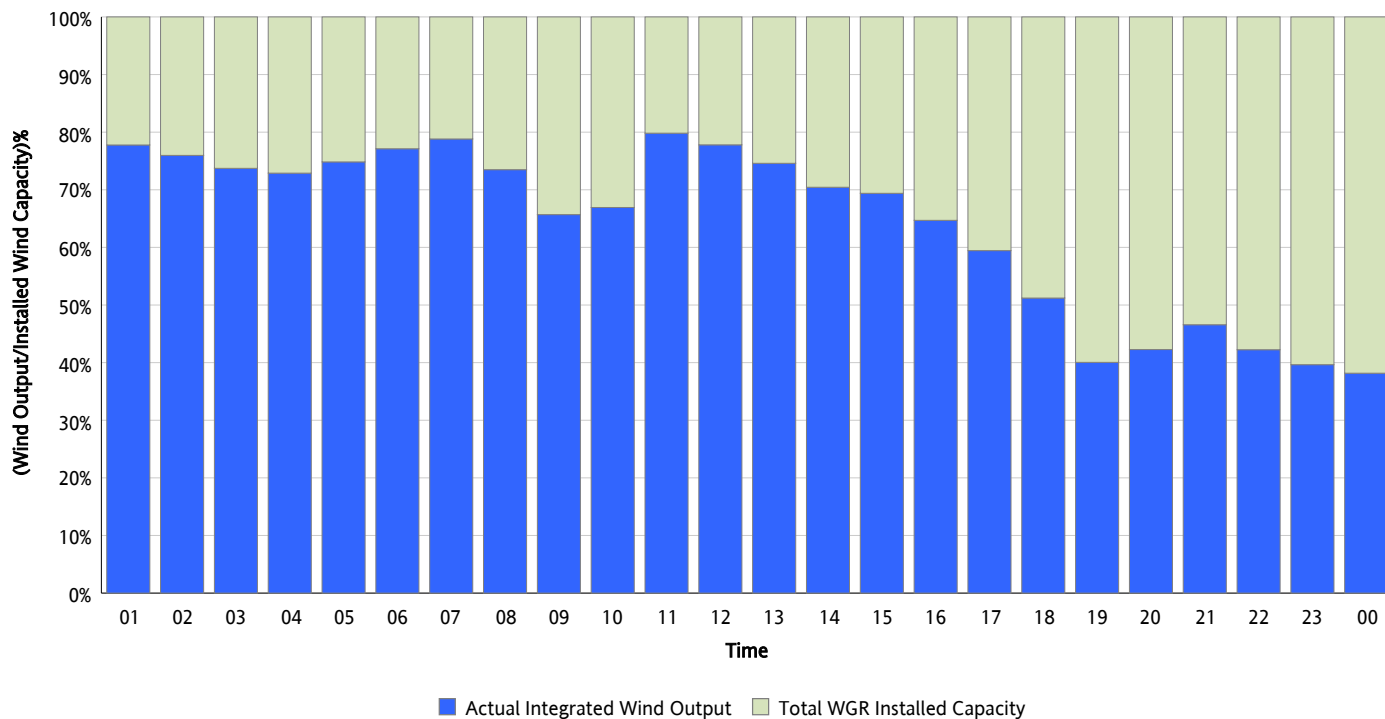
02/18/2013



* Wind Record and Wind Max represent instantaneous values and the rest of the values are integrated over the hour

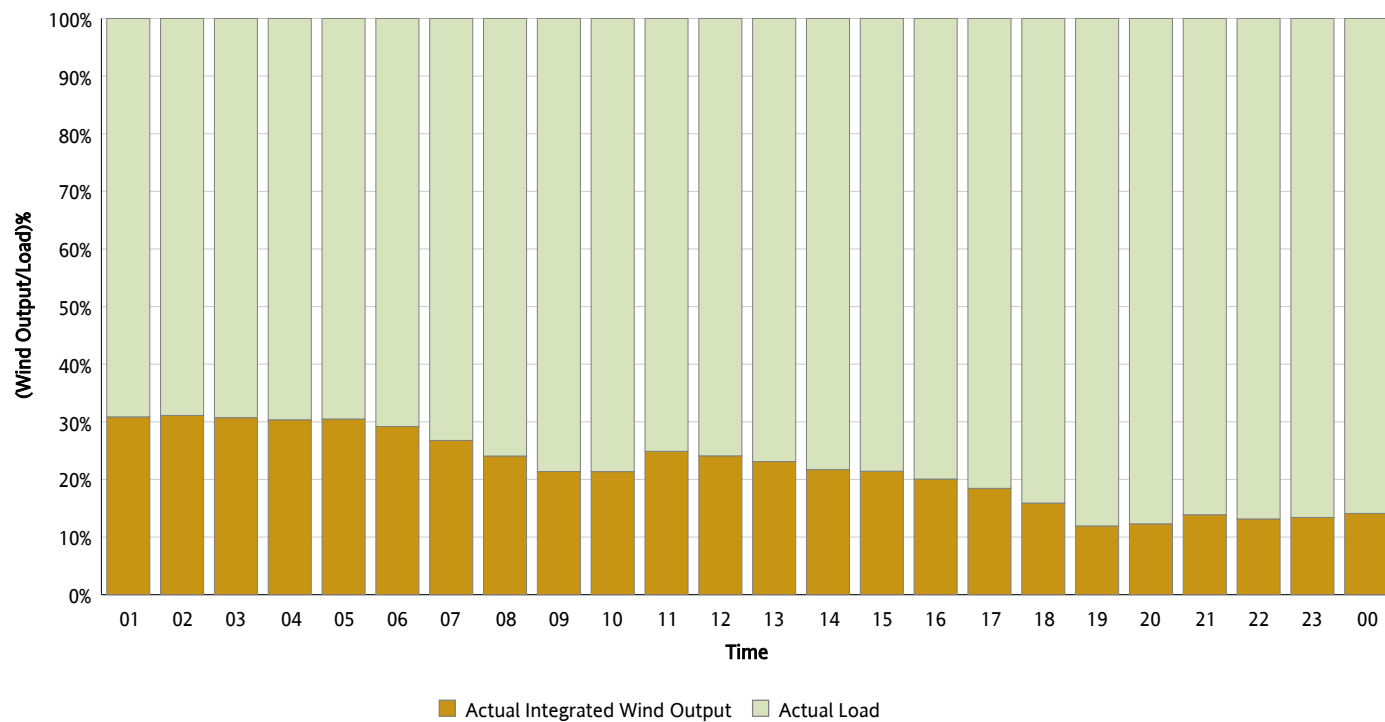
Actual Wind Output as a Percentage of the Total Installed Wind Capacity

02/18/2013



Actual Wind Output as a Percentage of the ERCOT Load

02/18/2013



ERCOT Load vs. Actual Wind Output

02/11/2013 - 02/18/2013

